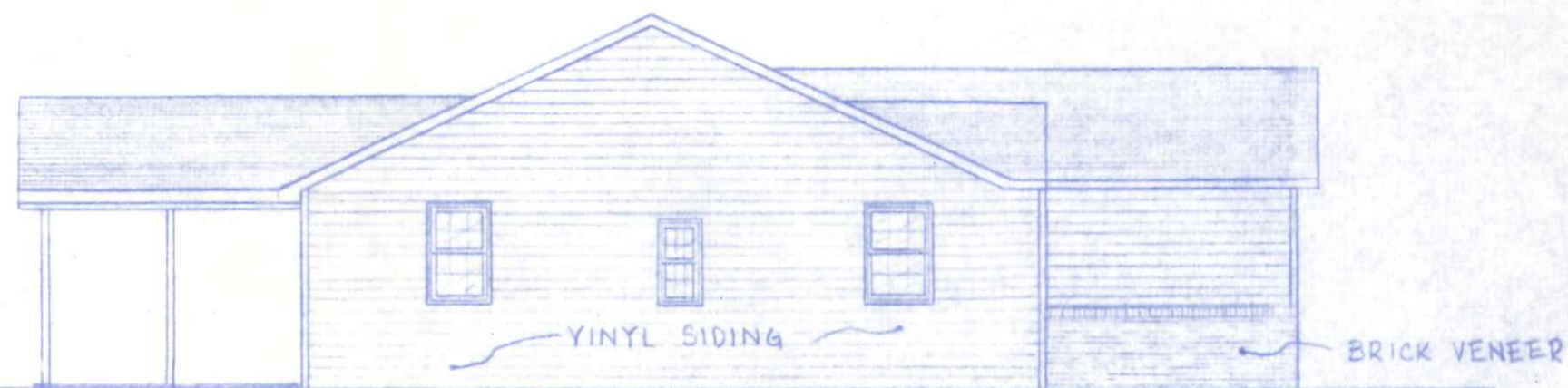


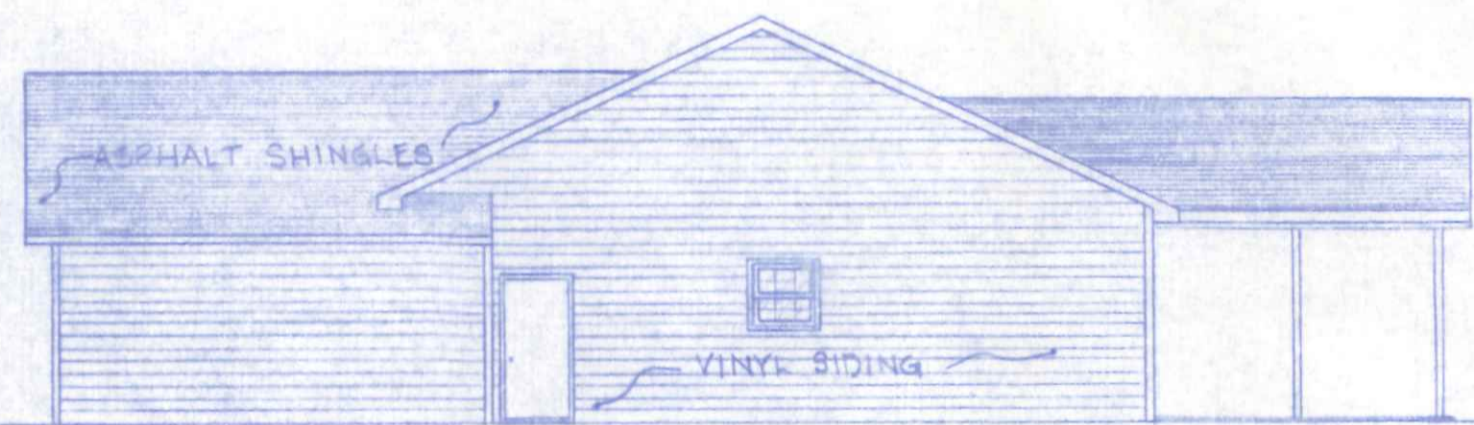
FRONT ELEVATION

1/4" = 1'-0"



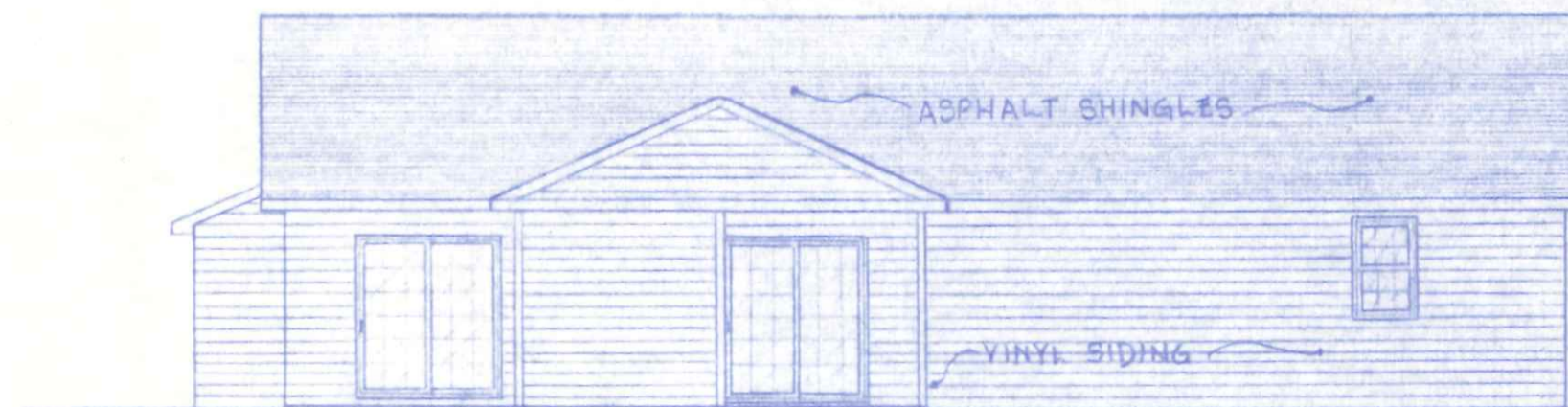
LEFT ELEVATION

1/8" = 1'-0"



RIGHT ELEVATION

1/8" = 1'-0"

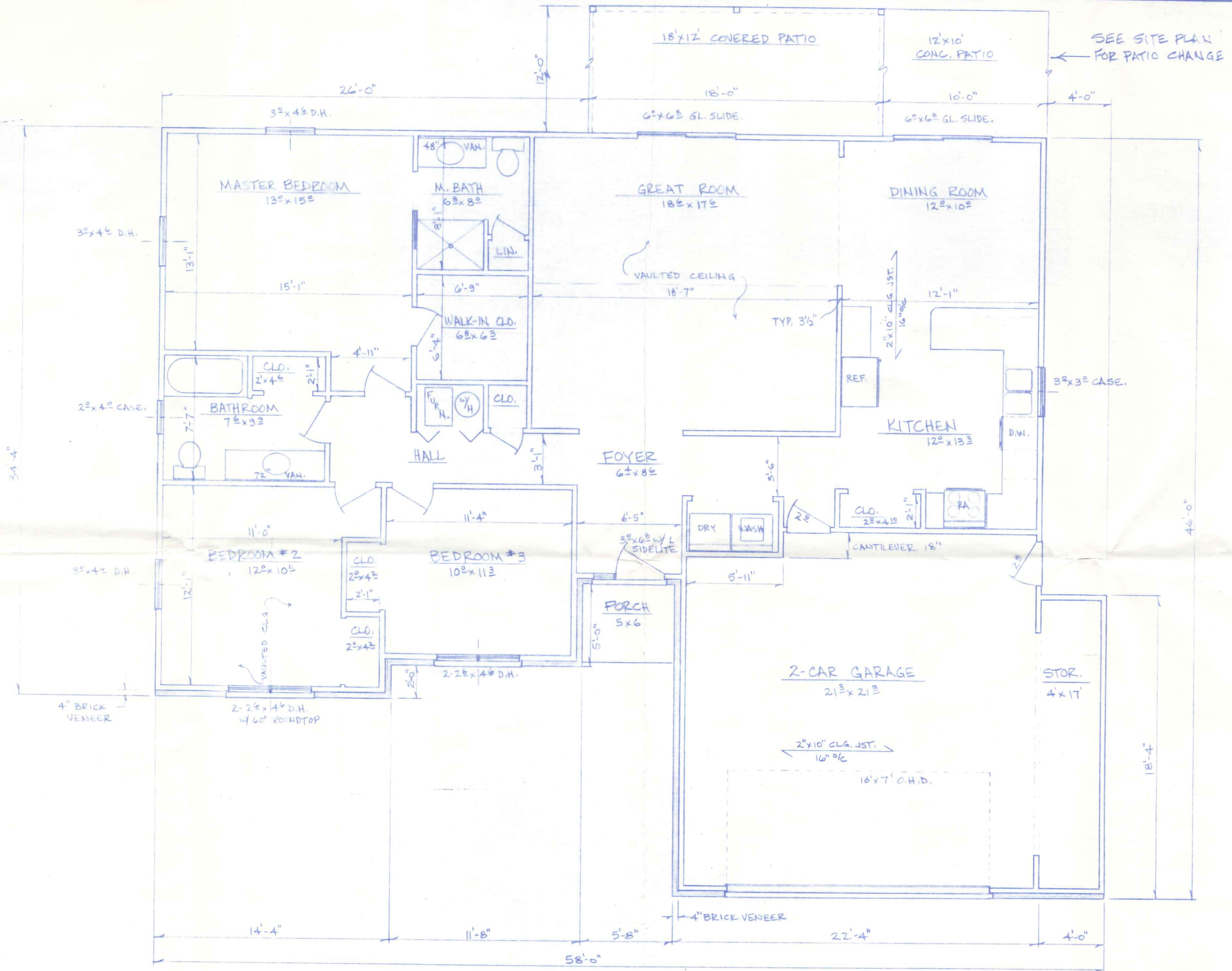


REAR ELEVATION

1/8" = 1'-0"

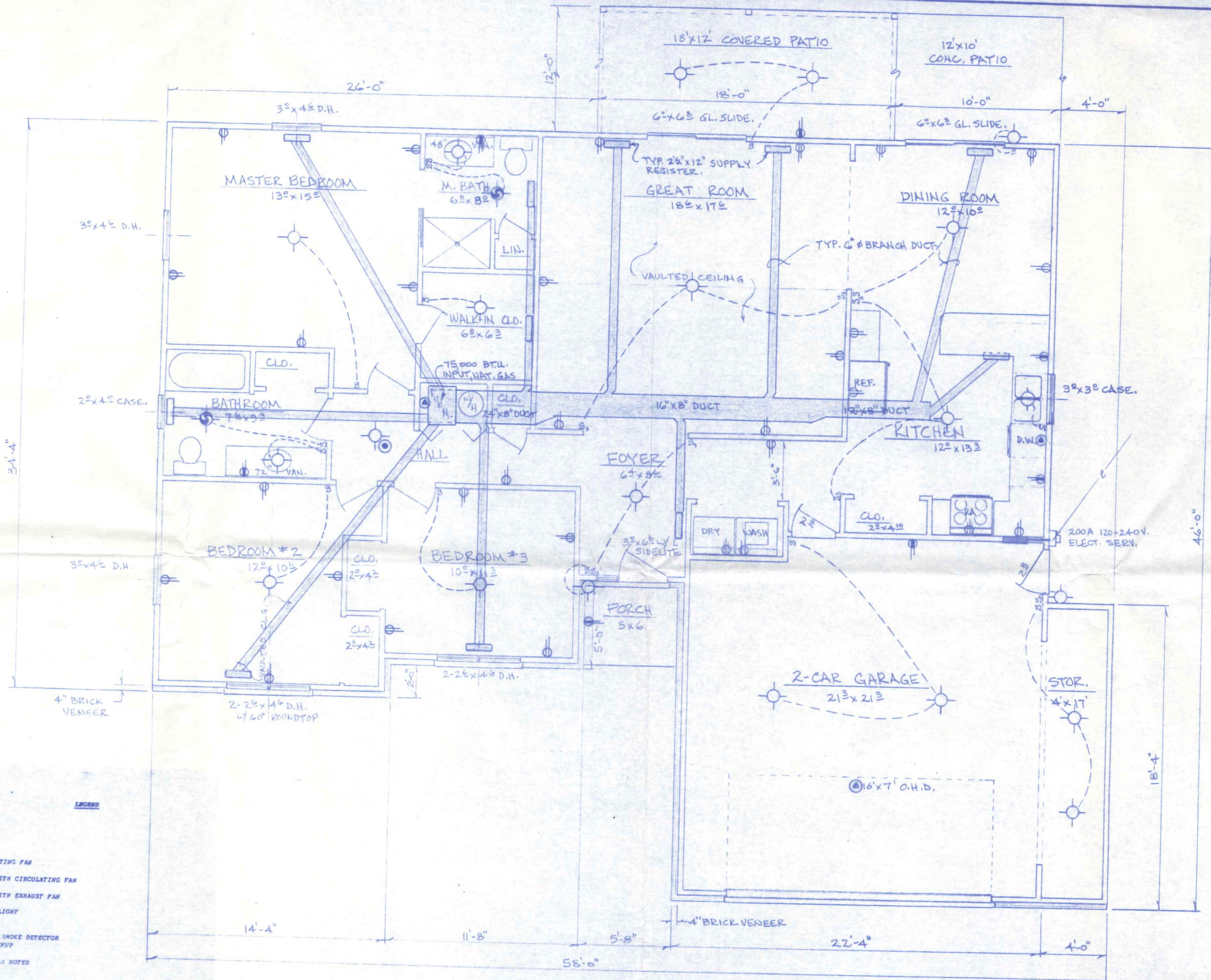
120 Capri

| | | | |
|-----------------------|------------------|----------------|--|
| BECK CONSTRUCTION CO. | | NAPOLEON, OH. | |
| CO. RD. 1A | APPROVED BY: | DRAWN BY RDS. | |
| SCALE: 1/4" = 1'-0" | DATE: JULY, 1989 | REVISED | |
| EXTERIOR ELEVATION | | DRAWING NUMBER | |
| PLAN NO. 243 | | 1 OF 4 | |



| | | |
|---------------|---------|-------|
| LIVING AREA | 1,569 | GROSS |
| PORCH - PATIO | 246 | " |
| GAR - STOR. | 553.5 | " |
| TOTAL | 2,368.5 | " |

| | |
|------------------------------|--------------------------|
| BECK CONSTRUCTION CO. | |
| CO. RD. M. | NAPOLEON, OH. |
| SCALE 1/4" = 1'-0" | APPROVED BY: |
| DATE JULY, 1989 | DRAWN BY R.D.S. |
| REVIS | |
| FLOORPLAN | |
| PLAN NO. 243 | DRAWING NUMBER 2 OF 4 |



- LEGEND**
- CEILING LIGHT
 - WALL LIGHT
 - CEILING CIRCULATING FAN
 - CEILING LIGHT WITH CIRCULATING FAN
 - CEILING LIGHT WITH EXHAUST FAN
 - ⊕ EXTERIOR FLOOD LIGHT
 - ⊙ PRIMARY POWERED SMOKE DETECTOR WITH BATTERY BACKUP
 - ⊙ SPECIAL OUTLET AS NOTED
 - ⊙ 120V - 20A DUPLEX RECEPTACLE
 - ⊙ 120V - 20A DUPLEX RECEPTACLE 2) SWITCHED
 - ⊙ 120V - 20A DUPLEX RECEPTACLE WITH G.F.C.I. PROTECTION
 - ⊙ 240V APPLIANCE OUTLET
 - ⊙ 120V - 20A LIGHT SWITCH
 - ⊙ 120V - 20A FAN SWITCH
 - ⊙ 120V - 20A 3 WAY LIGHT SWITCH

| | | |
|---------------|---------|-------|
| LIVING AREA | 1,569 | GROSS |
| PORCH - PATIO | 246 | " |
| GAR - STOR. | 553.5 | " |
| TOTAL | 2,368.5 | " |

| | |
|----------------------------------|--------------------------|
| BECK CONSTRUCTION CO. | |
| COORD. M. | NAPOLEON, OH. |
| SCALE: 1/4" = 1'-0" | APPROVED BY: |
| DATE: JULY, 1989 | DRAWN BY R.D.S. |
| FLOORPLAN - ELECTRICAL & HEATING | |
| PLAN NO. 243 | DRAWING NUMBER 3 OF 4 |

